



PACP
PORTUGUESE AMERICAN CITIZENSHIP PROJECT

A NON-PARTISAN INITIATIVE TO PROMOTE CITIZENSHIP AND CIVIC INVOLVEMENT

**IMMACULATE CONCEPTION PARISH
NEW BEDFORD, MA**

**EVALUATION
OF
THE 2012 ELECTIONS**

**PREPARED
APRIL 8, 2013**

Supported by Luso-American Foundation
Government of the Autonomous Region of the Azores
Business and Community Leaders in the Portuguese American Community

REPORT CONTENTS

| | |
|--|----------|
| Statistics and Summary of Work | 2 |
| Results | 2 |
| Results Graphs | 3 |
| Voter Turnout Summary | 3 |
| Voter Turnout by Age | 4 |
| Voter Turnout by Age and Gender | 4 |
| Voter Turnout by Age and Gender | 5 |
| Voter Turnout - November 2012 by Gender and Party | 6 |
| Voter Turnout – 2008 vs. 2012 Presidential Elections | 7 |
| Appendices | 8 |
| Registered Voters by Age and Gender | 9 |
| Registered Voters by Age and Party | 10 |
| Registered vs. Actual Voters by Age and Gender | |
| November 2012 | 11 |
| Registered vs. Actual Voters | 12 |
| Actual Voters by Gender and Party – November 2012 | 13 |
| Voted in both 2008 and 2012 Presidential Elections | 14 |
| Voted in all last three elections | 14 |

Key Statistics – 2012

Voter turnout data received from the New Bedford Board of Election Commissioners, February 28, 2013.

Immaculate Conception Parish (*City of New Bedford in italics*)

- All Household Members registered to vote: 987 (51,575)
- Voter Turnout - March 2012: 8.3% (8.5%)*
- Voter Turnout - September 2012: 19.7% (14.8%)
- Voter turnout – November 2012: 72.6% (58.8%)

* No reminder postcards were sent out for the March, 2012 election.

Summary of Work

Immaculate Conception has been an active participant in the Portuguese American Citizenship Project since 2002.

For the September and November, 2012 elections, postcards were sent out to each parish household where at least one household member was registered to vote. No cards were sent out for the March, 2012 election.

Results

Immaculate Conception's voter turnout for the September and November 2012 elections was consistently higher than citywide turnout. The Immaculate Conception turnout for the September Primary Elections was 19.5%, as compared to the city turnout of 14.8%. The Immaculate Conception turnout for the November General Elections was 72.6%, which was significantly higher than the citywide turnout of 58.8%.

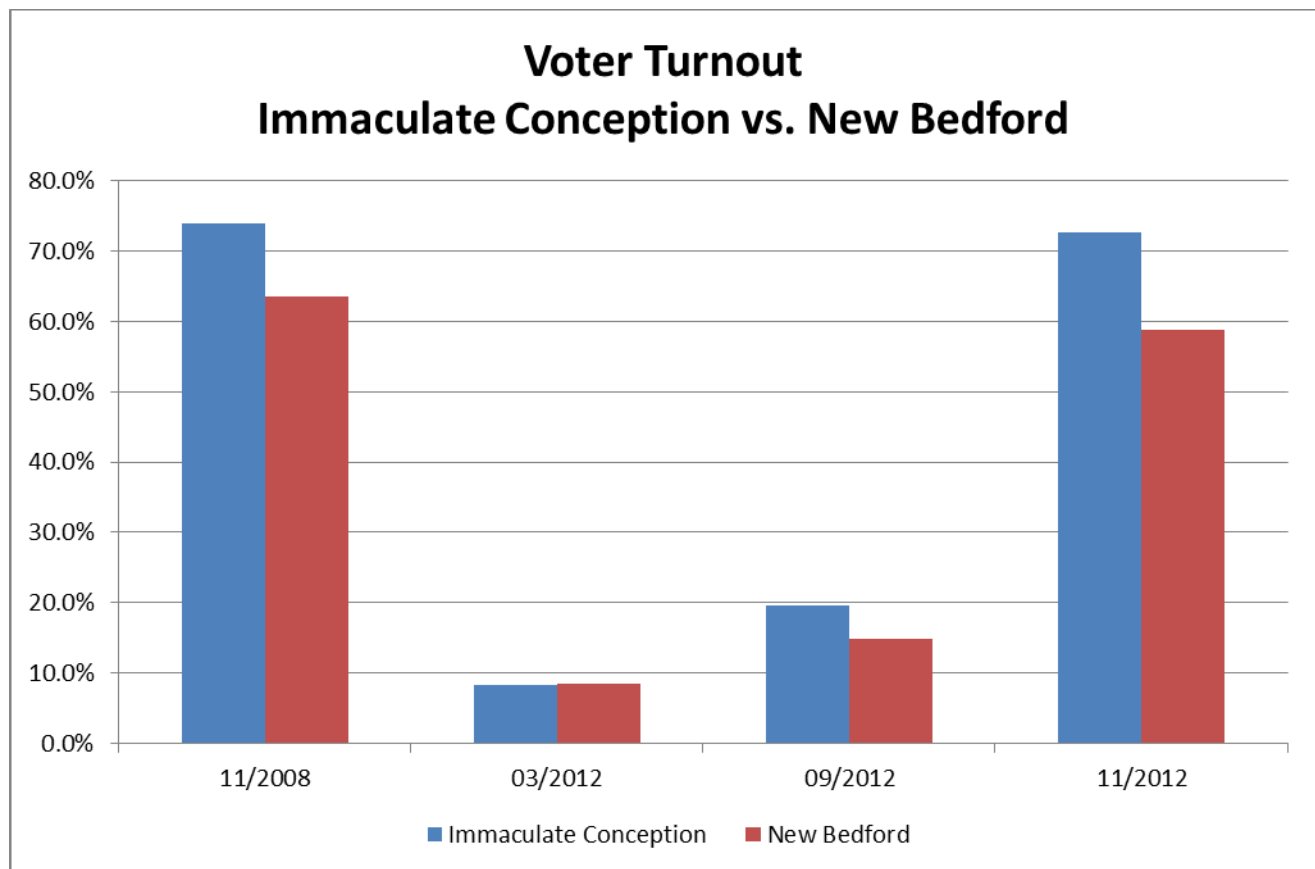
As noted above, no reminder cards were sent out for the March 2012 local election. The Immaculate Conception voter turnout in March was 8.2%, which was slightly lower than the citywide turnout of 8.5%.

Voter turnout is not uniform across age groups and gender. Turnout for Immaculate Conception voters younger than age 50 tended to be lower than the citywide turnout for those same age groups, while turnout for Immaculate Conception voters age 50 and older tended to be higher than the citywide turnout for the same age groups.

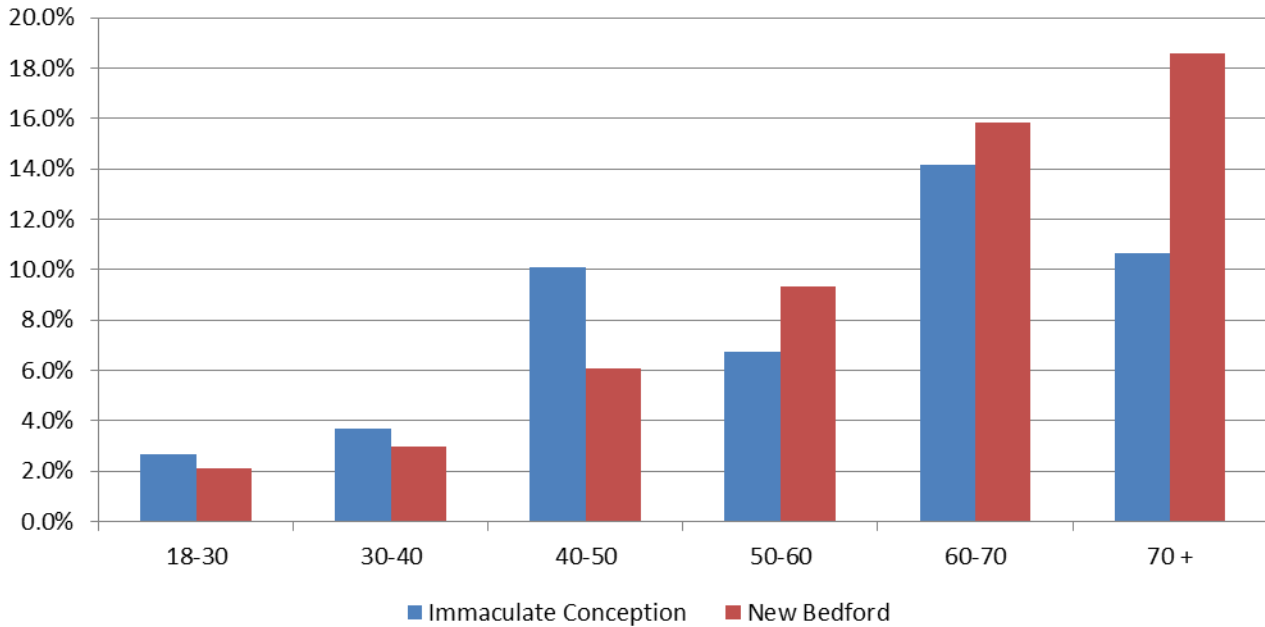
Women tended to have a higher voter turnout than men across most age groups. The one exception was the 40 – 50 year age group in the November 2012 election where voter turnout for men was higher than women.

The following graphs summarize voter turnout by age, gender and political party affiliation.

Results Graphs

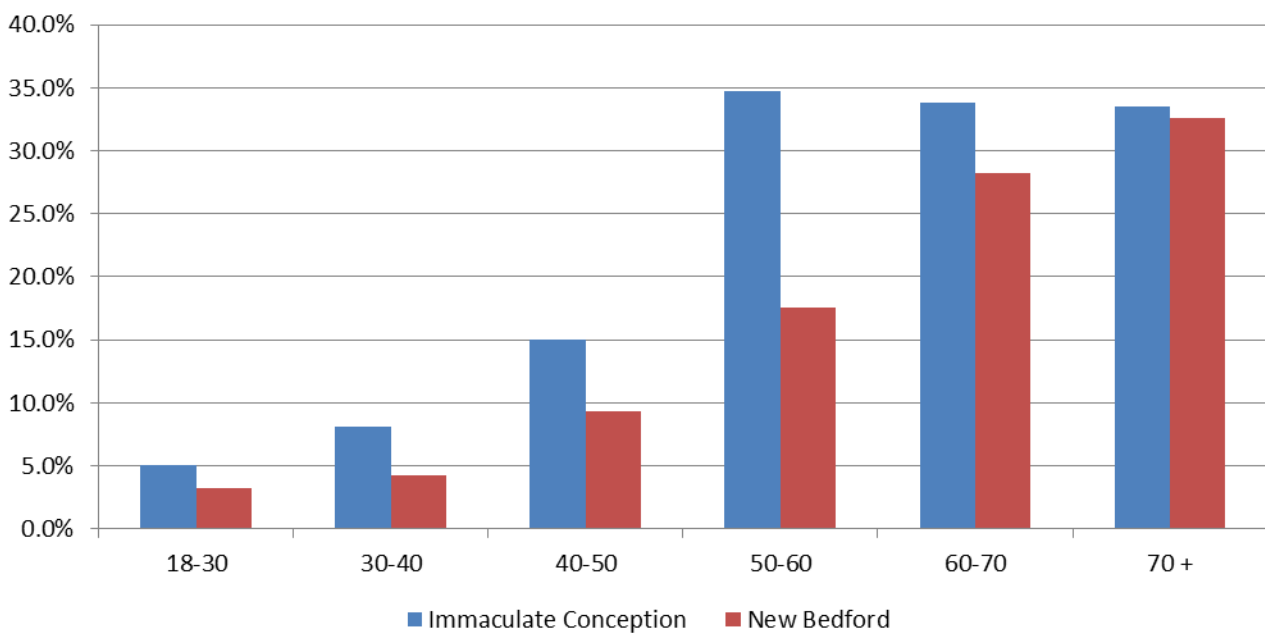


Turnout By Age - March 2012 Immaculate Conception Parish vs. New Bedford

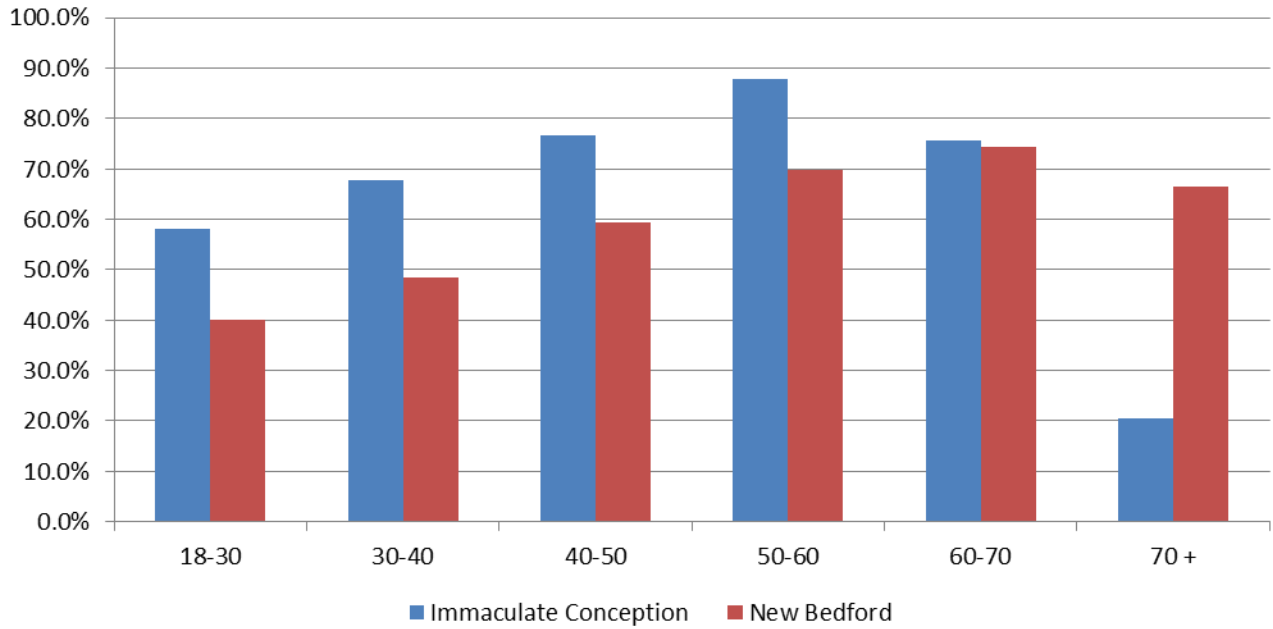


* Reminder postcards were not sent out for the March, 2012 election.

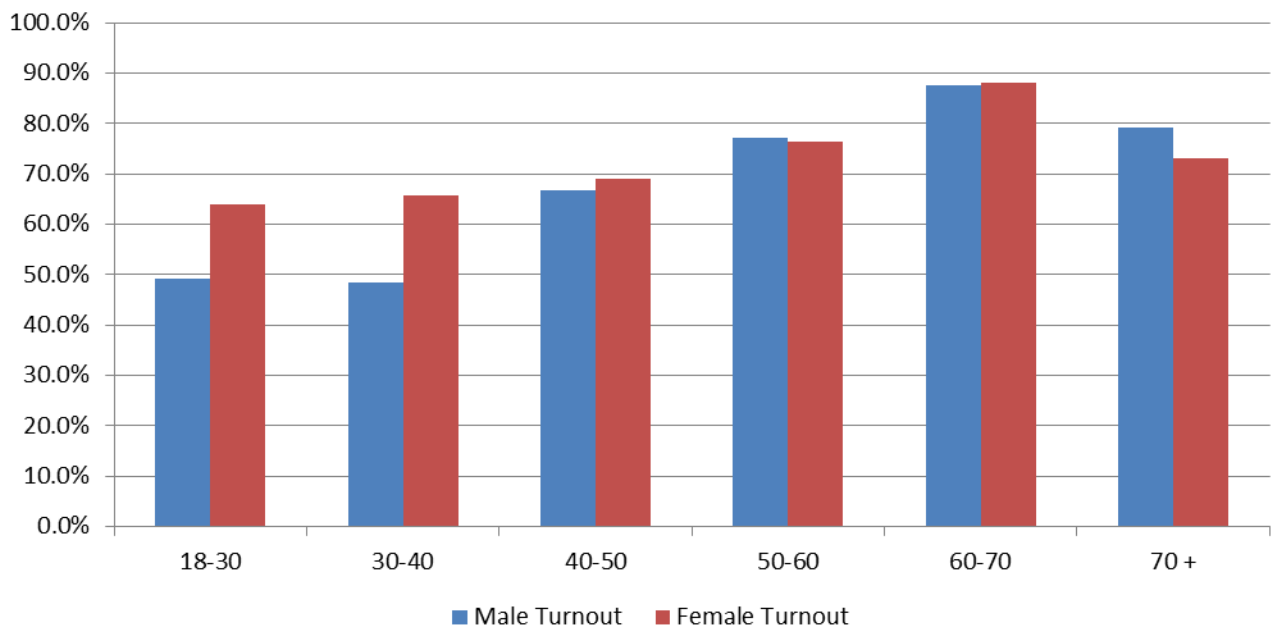
Turnout By Age - September 2012 Immaculate Conception Parish vs. New Bedford



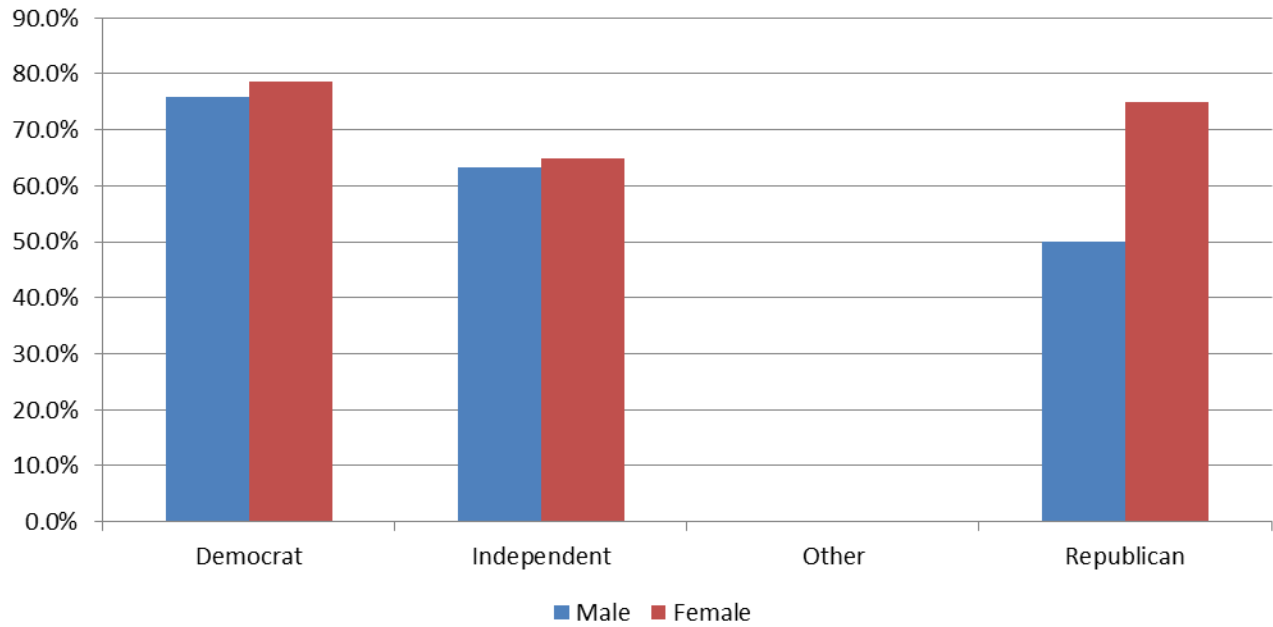
Turnout By Age - November 2012 Immaculate Conception Parish vs. New Bedford



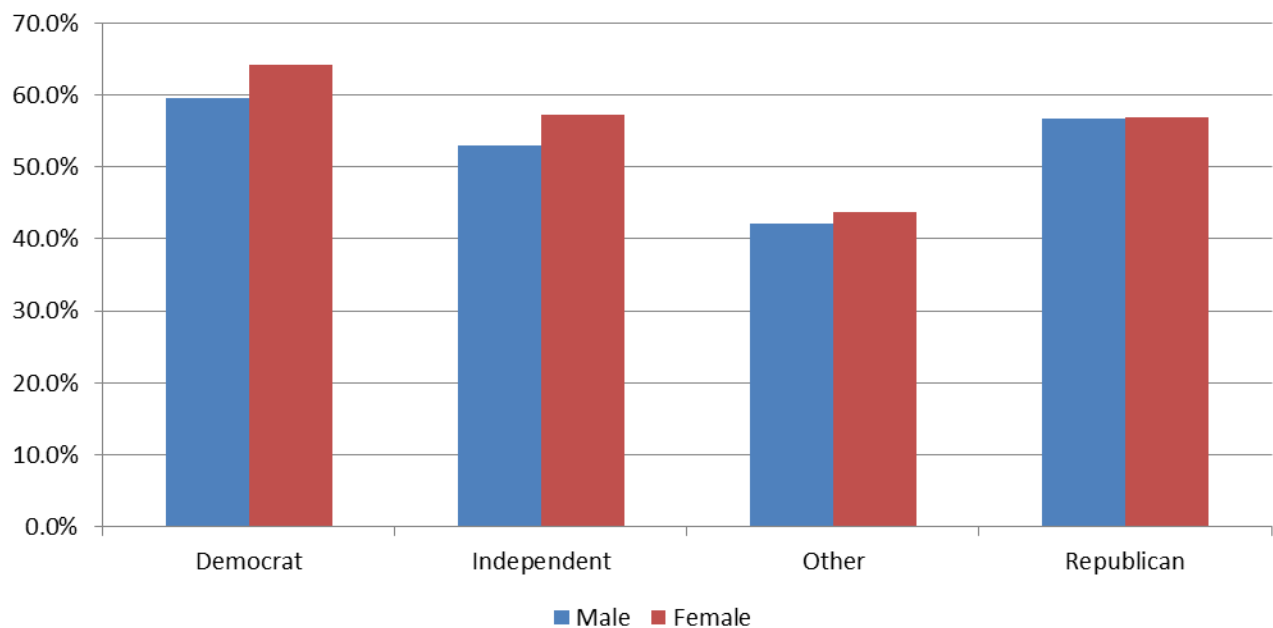
Voter Turnout by Age and Gender November 2012 Immaculate Conception Parish



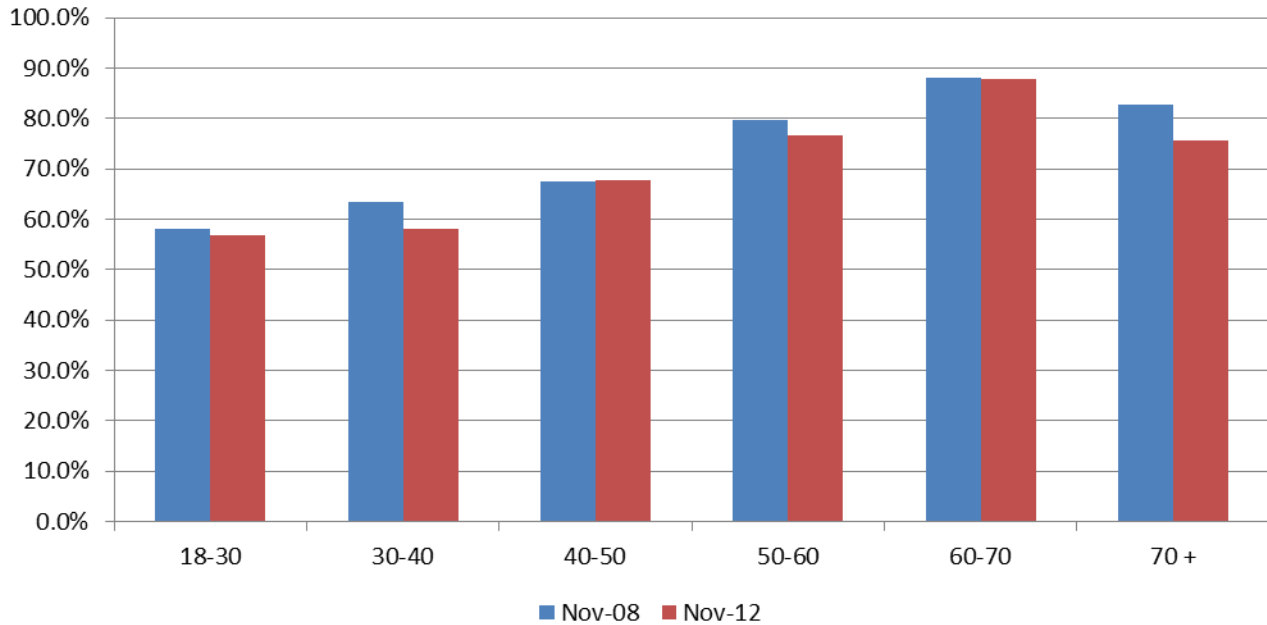
Voter Turnout - November 2012 Election Immaculate Conception By Gender and Party



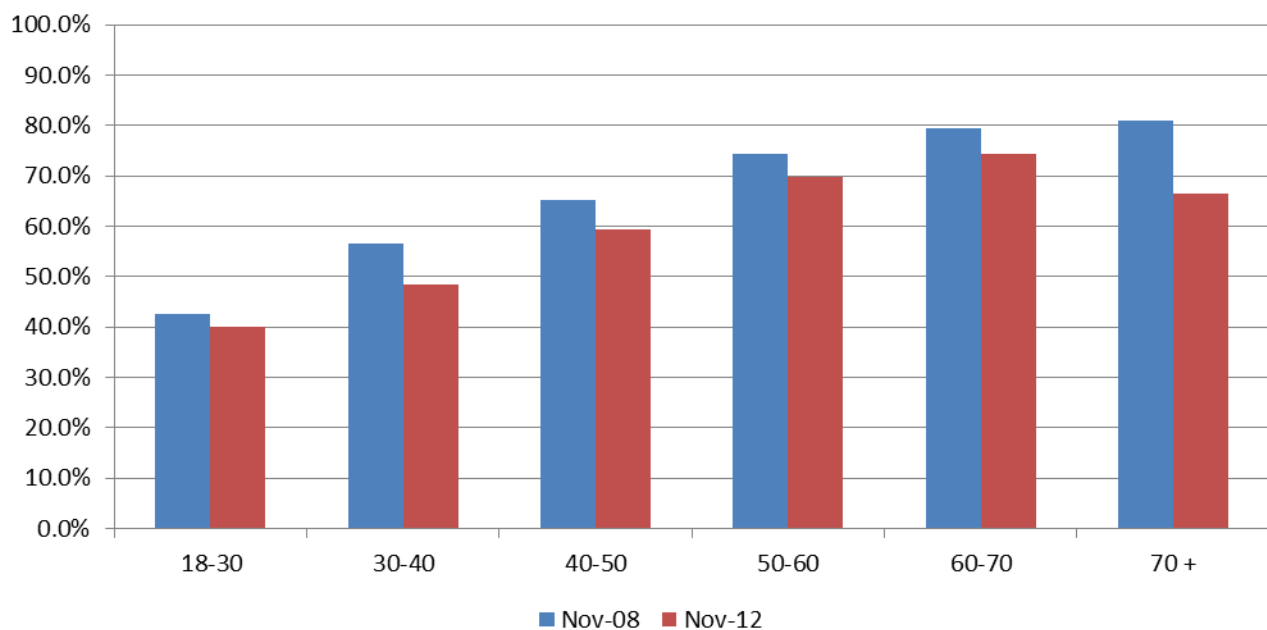
Voter Turnout - November 2012 Election New Bedford By Gender and Party



Voter Turnout 2008 vs. 2012 Presidential Elections Immaculate Conception by Age



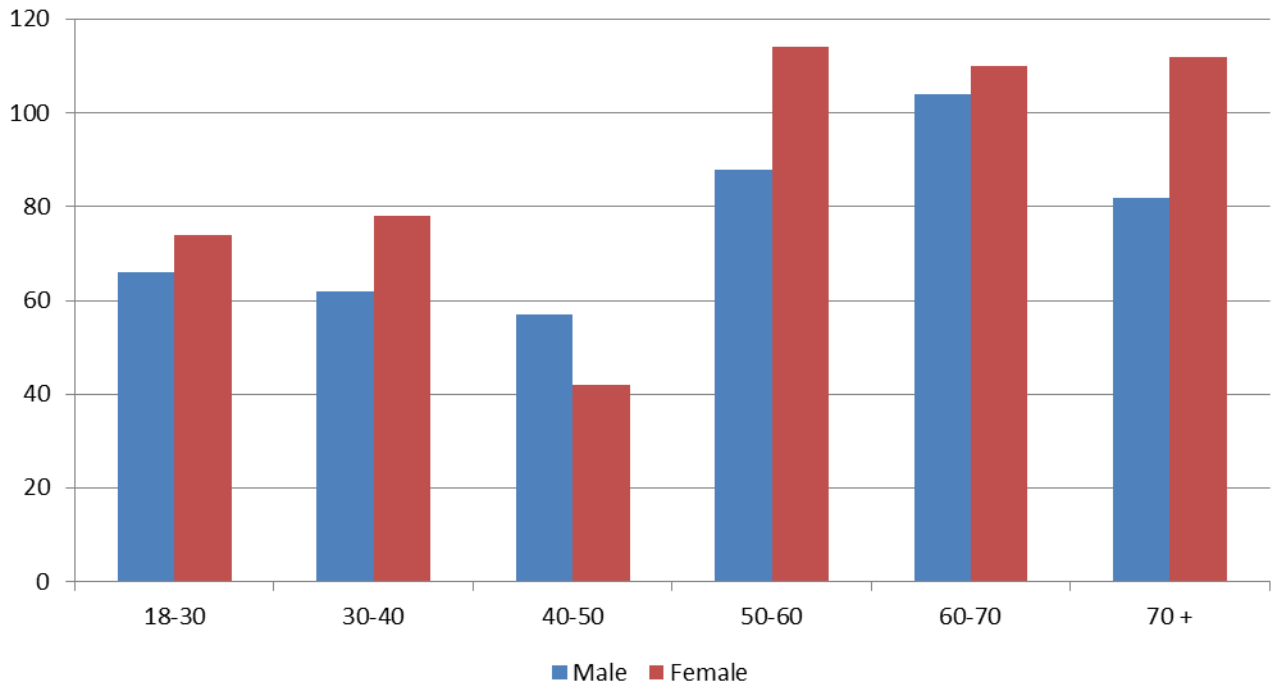
Voter Turnout 2008 vs. 2012 Presidential Elections New Bedford by Age



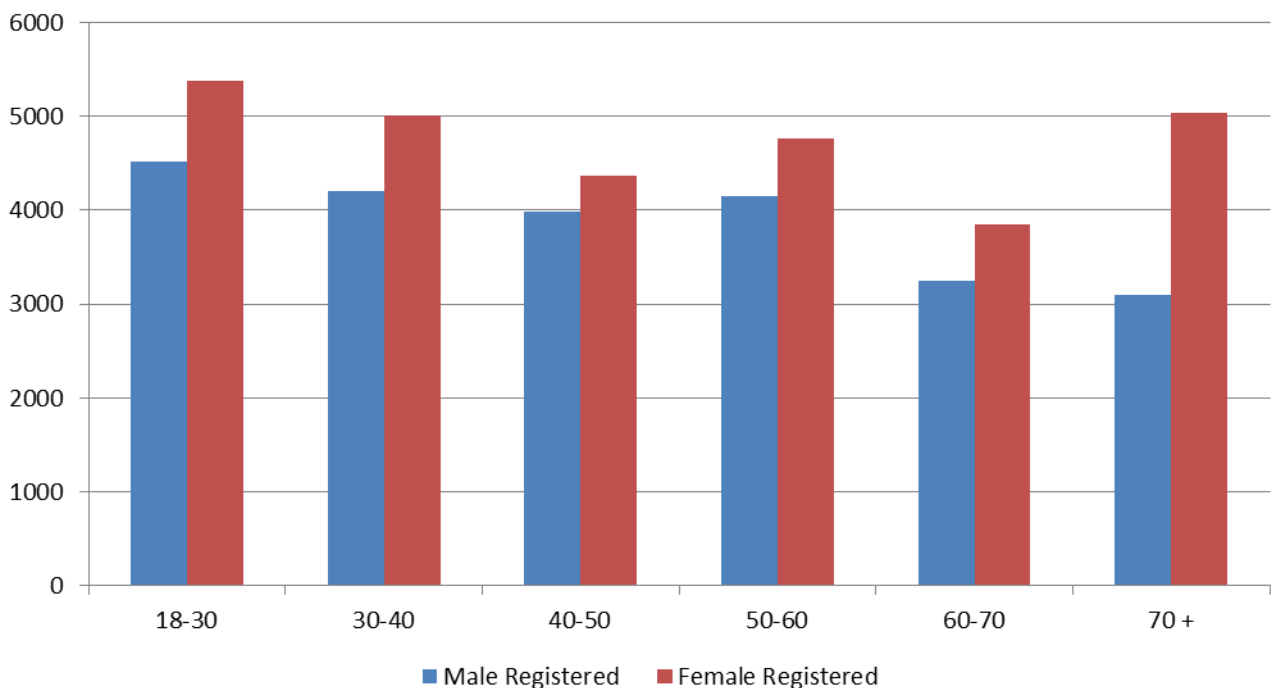
Appendices

| | |
|---|-----------|
| Registered Voters by Age and Gender | 9 |
| Registered Voters by Age and Party | 10 |
| Registered vs. Actual Voters by Age and Gender | |
| November 2012 | 11 |
| Registered vs. Actual Voters | 12 |
| Actual Voters by Gender and Party – November 2012 | 13 |
| Voted in both 2008 and 2012 Presidential Elections | 14 |
| Voted in all last three elections | 14 |

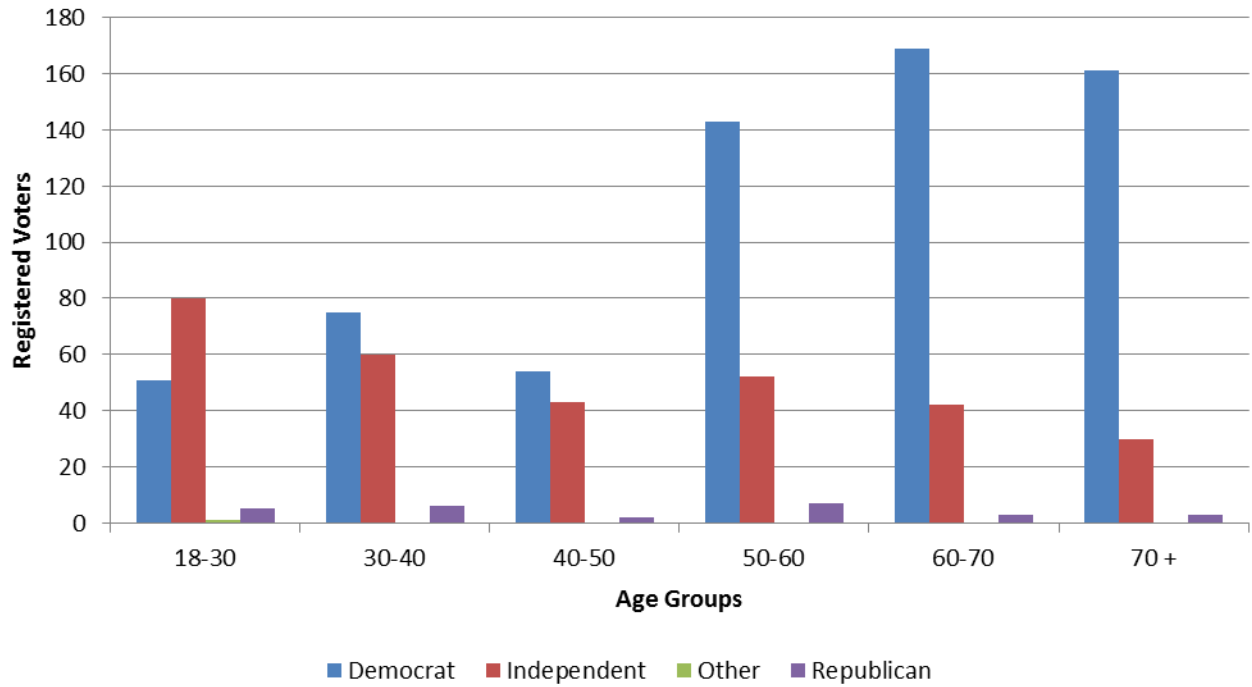
Registered Voters by Age and Gender Immaculate Conception Parish



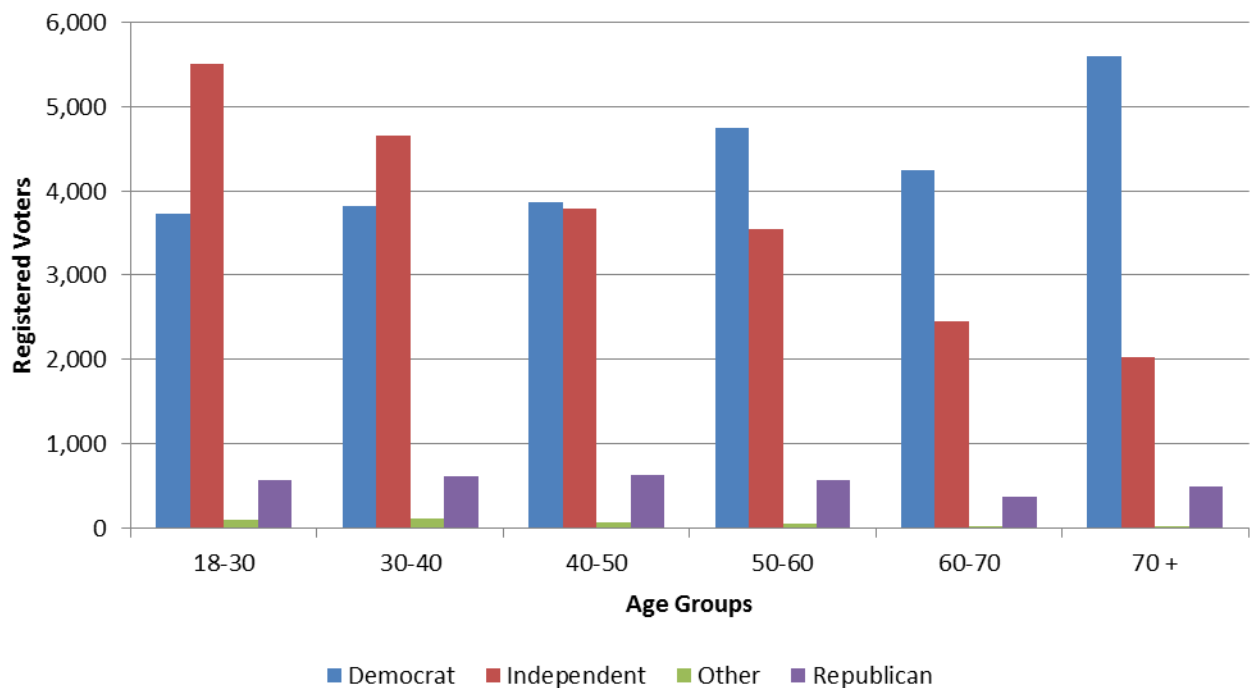
Registered Voters by Age and Gender New Bedford



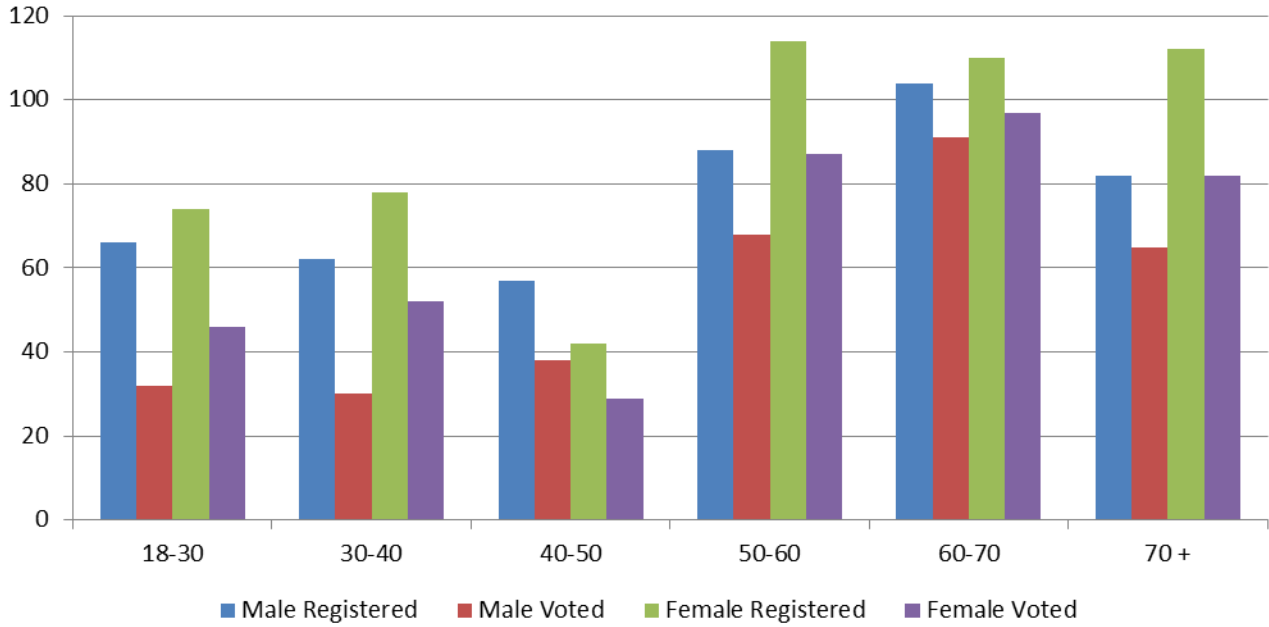
Registered Voters by Age and Party Immaculate Conception



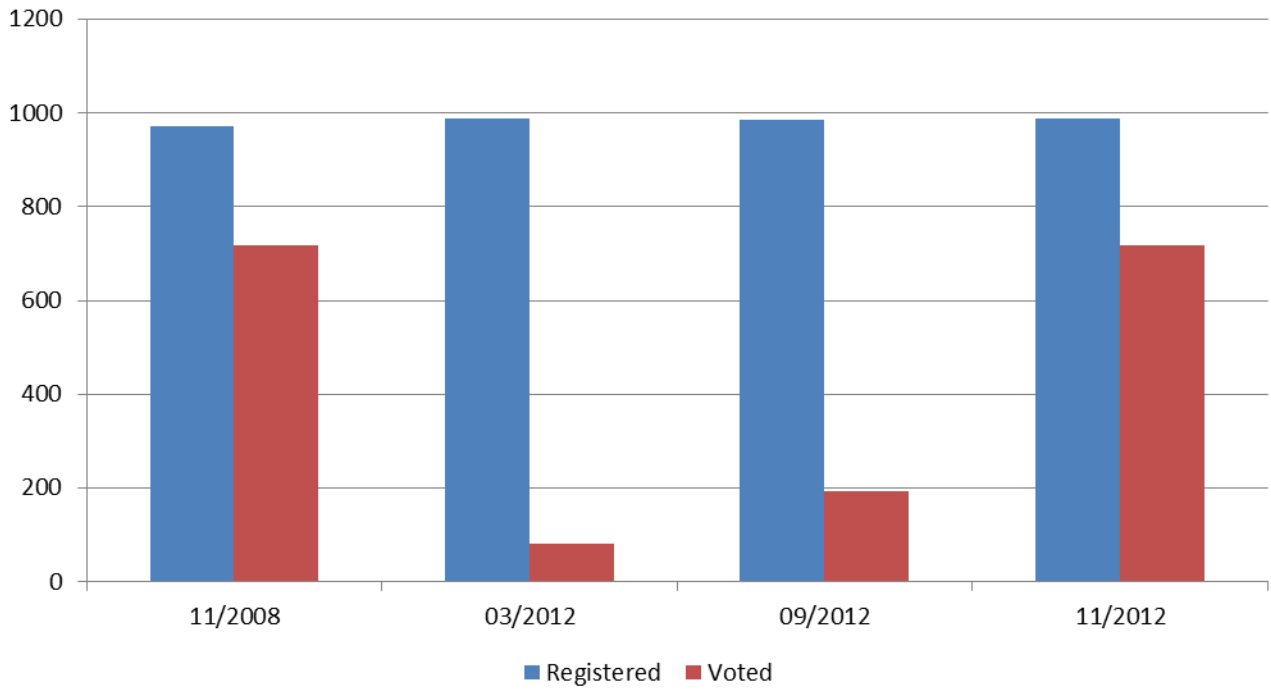
Registered Voters by Age and Party New Bedford



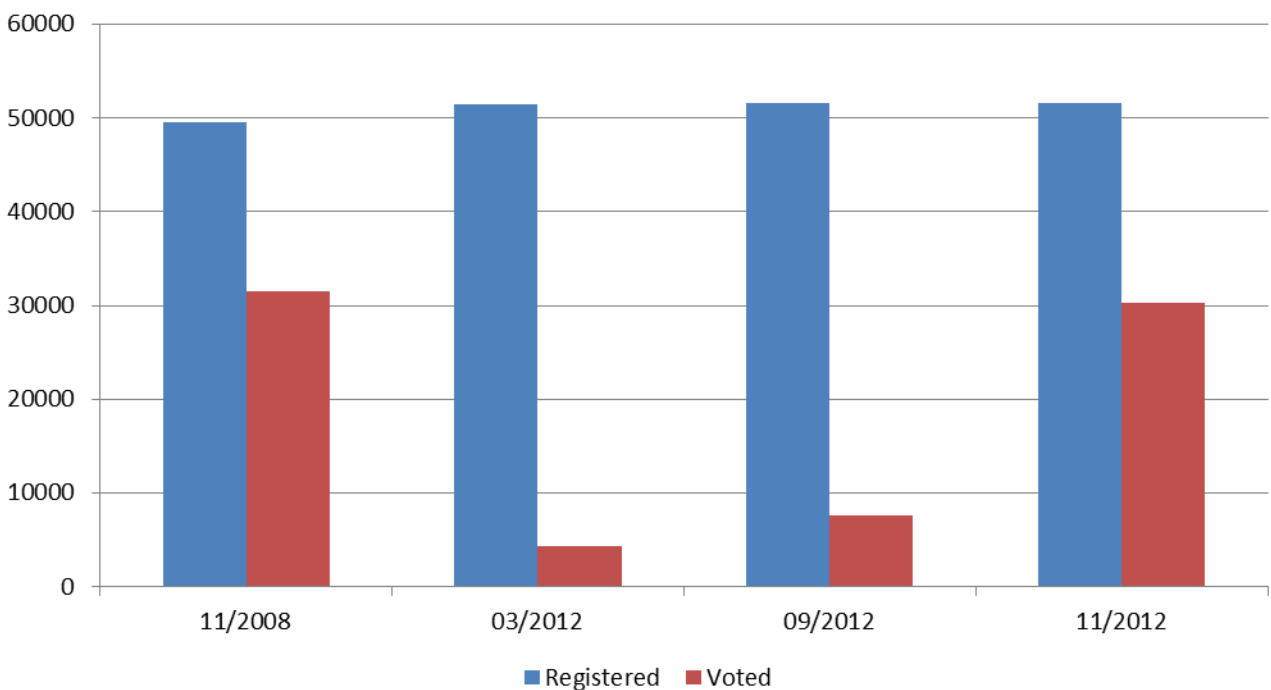
Voter Turnout - November 2012 Immaculate Conception Parish By Age and Gender



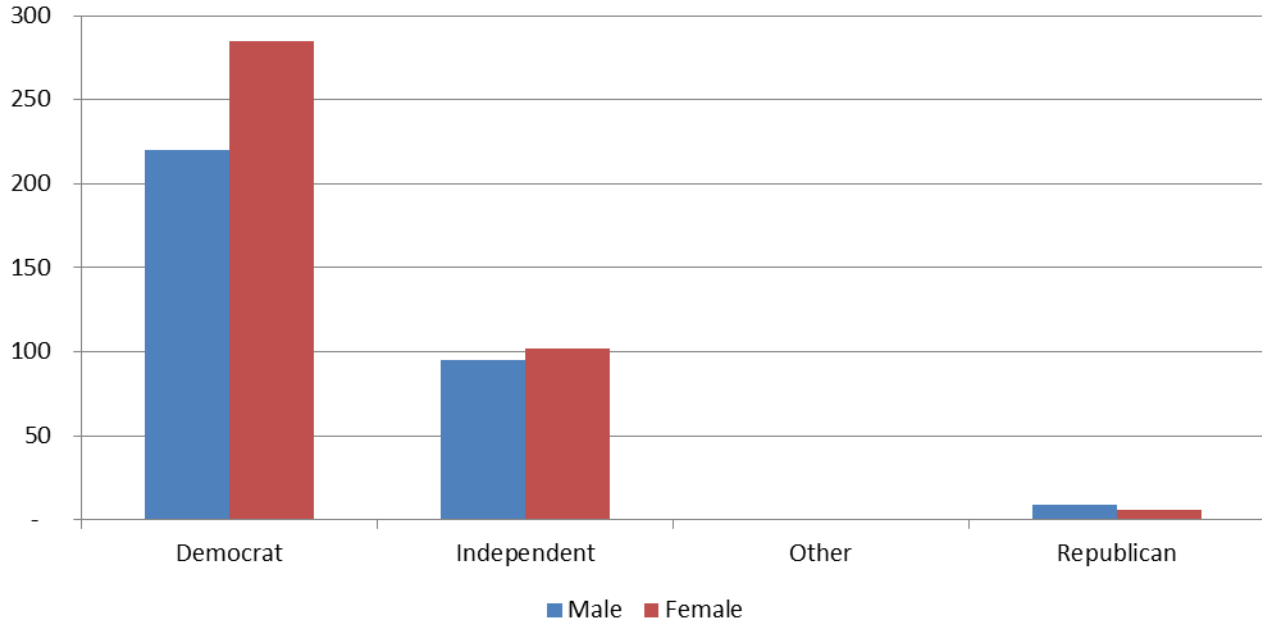
Registered Voters vs. Actual Voters Immaculate Conception Parish



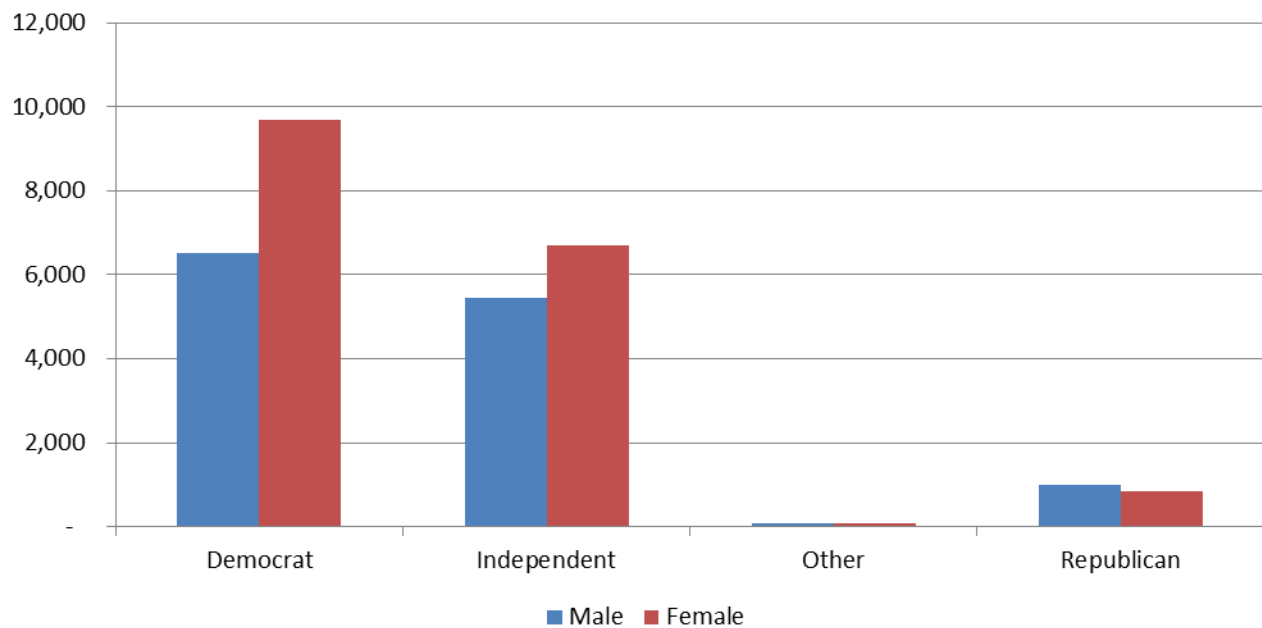
Registered Voters vs. Actual Voters New Bedford



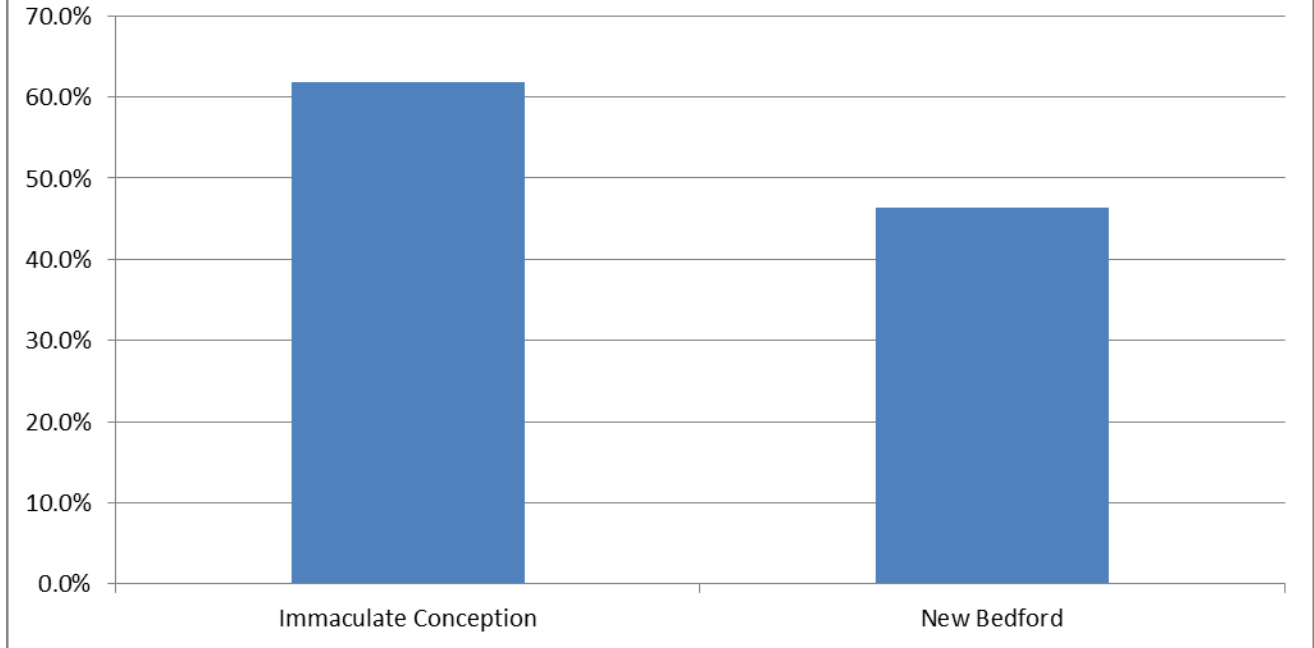
Voted in November 2012 Election Immaculate Conception Actual Voters By Gender and Party



Voted in November 2012 Election New Bedford Actual Voters By Gender and Party



Voter Turnout Voted in Both 2008 and 2012 Presidential Elections Immaculate Conception vs. New Bedford



Voter Turnout Voted in Last 3 Elections Immaculate Conception vs. New Bedford

